

# GANBANYOKU-Usual Method

for Private Spa

JAPAN





# FS Single

Single Bed Style

## Reference Specification

1.	Main ore	: Tenshoh seki	3 pcs
2.	Frame Stone	: Granite	1 set
3.	Insulation	: Urethane foam	4 pcs
4.	Heater Cable	: 1φ100/200V 50/60Hz	1 set
5.	Sensor	: Waterproof	2 pcs
6.	Controller	: 1φ100/200V 50/60Hz	1 set
7.	Transformer	: IN240/220V OUT200/100V	1 set

Type of Heater : Waterproof type for ganbanyoku

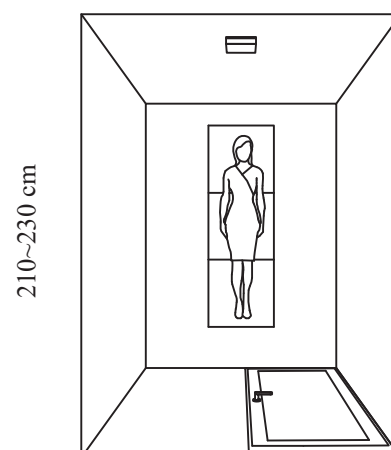
Voltage : Follow the working drawing

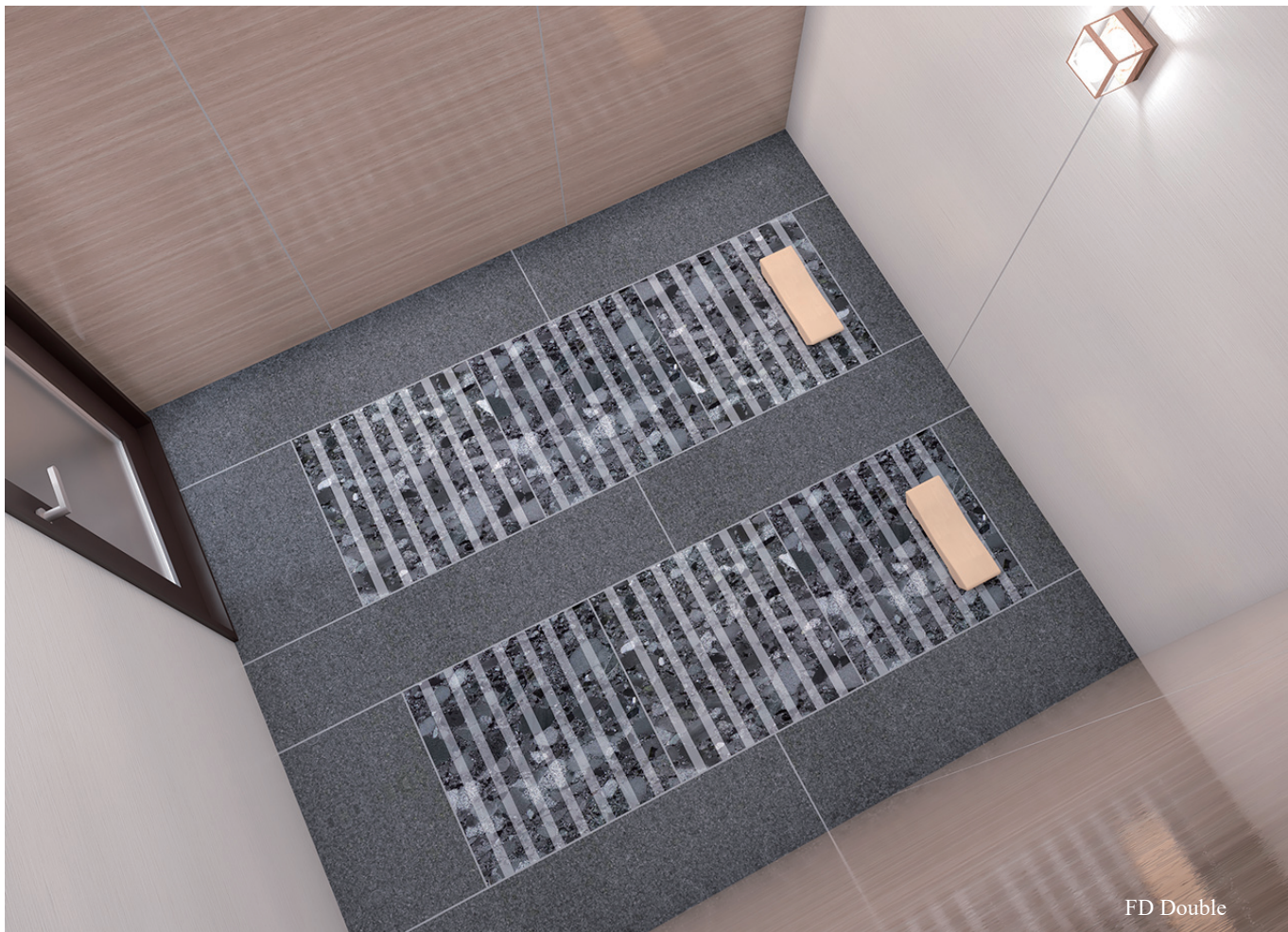
Consumption : Follow the working drawing

Control System : Automatic control by temperature sensor.  
Built-in 24-hour timer.

## Standard Size FS Single

130~140 cm





# FD Double

Double Bed Style

## Reference Specification

1.	Main ore	: Tenshoh seki	6 pcs
2.	Frame Stone	: Granite	1 set
3.	Insulation	: Urethane foam	6 pcs
4.	Heater Cable	: 1φ100/200V 50/60Hz	1 set
5.	Sensor	: Waterproof	2 pcs
6.	Controller	: 1φ100/200V 50/60Hz	1 set
7.	Transformer	: IN240/220V OUT200/100V	1 set

Type of Heater : Waterproof type for ganbanyoku

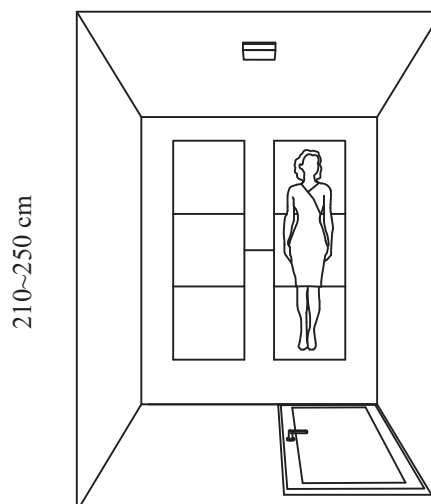
Voltage : Follow the working drawing

Consumption : Follow the working drawing

Control System : Automatic control by temperature sensor.  
Built-in 24-hour timer.

Standard Size FD Double

180~210 cm





## KD Double

Double Bed Style

### Reference Specification

1.	Main ore	: Tenshoh seki	6 pcs
2.	Frame Stone	: Granite	1 set
3.	Insulation	: Urethane foam	6 pcs
4.	Heater Cable	: 1φ100/200V 50/60Hz	2 set
5.	Sensor	: Waterproof	4 pcs
6.	Controller	: 1φ100/200V 50/60Hz	2 set
7.	Transformer	: IN240/220V OUT200/100V	1 set

Type of Heater : Waterproof type for ganbanyoku

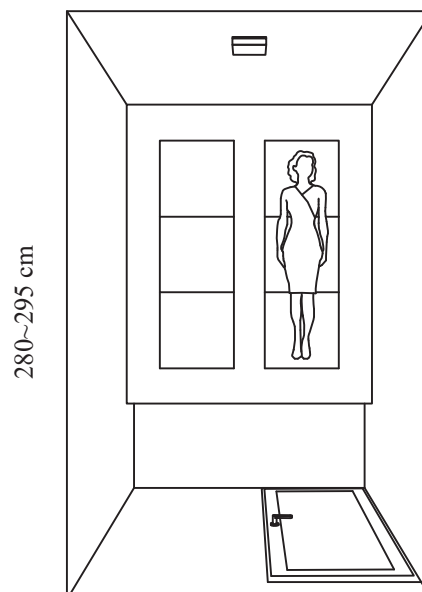
Voltage : Follow the working drawing

Consumption : Follow the working drawing

Control System : Automatic control by  
temperature sensor.  
Built-in 24-hour timer.

Standard Size KD Double

180~210 cm





# KDK King

King Bed Style

Standard Size KDK King

250~280 cm

## Reference Specification

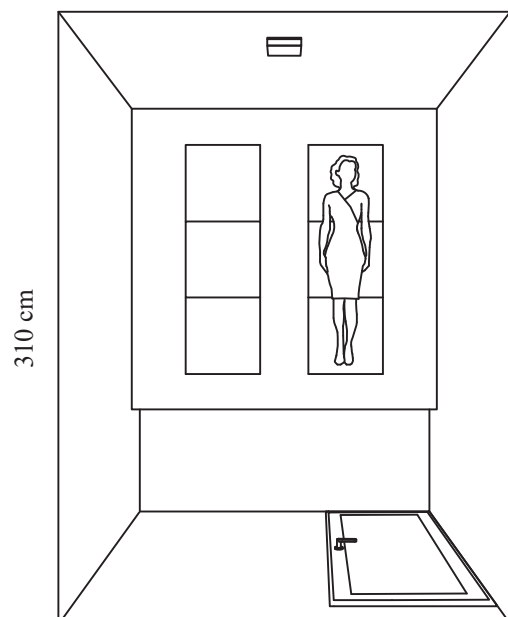
1.	Main ore	: Tenshoh seki	6 pcs
2.	Frame Stone	: Granite	1 set
3.	Insulation	: Urethane foam	8 pcs
4.	Heater Cable	: 1φ100/200V 50/60Hz	2 set
5.	Sensor	: Waterproof	4 pcs
6.	Controller	: 1φ100/200V 50/60Hz	2 set
7.	Transformer	: IN240/220V OUT200/100V	1 set

Type of Heater : Waterproof type for ganbanyoku

Voltage : Follow the working drawing

Consumption : Follow the working drawing

Control System : Automatic control by temperature sensor.  
Built-in 24-hour timer.





## TS Single

Single Bed Style

### Reference Specification

1.	Main ore	: Tenshoh seki	3 pcs
2.	Frame Stone	: Granite	1 set
3.	Insulation	: Urethane foam	6 pcs
4.	Heater Cable	: 1φ100/200V 50/60Hz	2 set
5.	Sensor	: Waterproof	4 pcs
6.	Controller	: 1φ100/200V 50/60Hz	2 set
7.	Transformer	: IN240/220V OUT200/100V	1 set

Type of Heater : Waterproof type for ganbanyoku

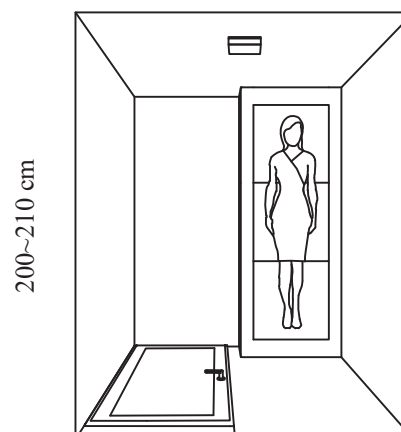
Voltage : Follow the working drawing

Consumption : Follow the working drawing

Control System : Automatic control by  
temperature sensor.  
Built-in 24-hour timer.

Standard Size TS Single

170~200 cm





## TSL Single Long

Single Bed Long Style

### Reference Specification

1.	Main ore	: Tenshoh seki	3 pcs
2.	Frame Stone	: Granite	1 set
3.	Insulation	: Urethane foam	7 pcs
4.	Heater Cable	: 1φ100/200V 50/60Hz	2 set
5.	Sensor	: Waterproof	4 pcs
6.	Controller	: 1φ100/200V 50/60Hz	2 set
7.	Transformer	: IN240/220V OUT200/100V	1 set

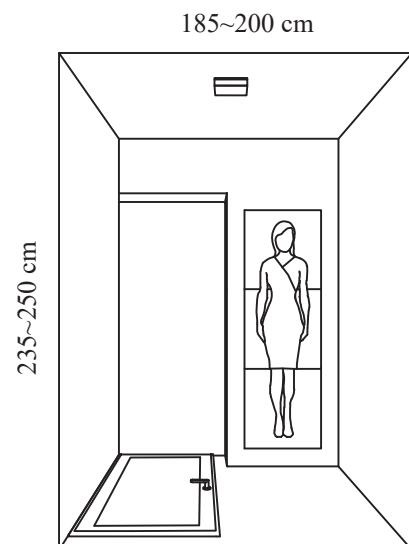
Type of Heater : Waterproof type for ganbanyoku

Voltage : Follow the working drawing

Consumption : Follow the working drawing

Control System : Automatic control by  
temperature sensor.  
Built-in 24-hour timer.

Standard Size TSL Single





# TT Twin

Twin Bed Style

## Reference Specification

1. Main ore	: Tenshoh seki	6 pcs
2. Frame Stone	: Granite	1 set
3. Insulation	: Urethane foam	8 pcs
4. Heater Cable	: 1φ100/200V 50/60Hz	3 set
5. Sensor	: Waterproof	4 pcs
6. Controller	: 1φ100/200V 50/60Hz	2 set
7. Transformer	: IN240/220V OUT200/100V	1 set

Type of Heater : Waterproof type for ganbanyoku

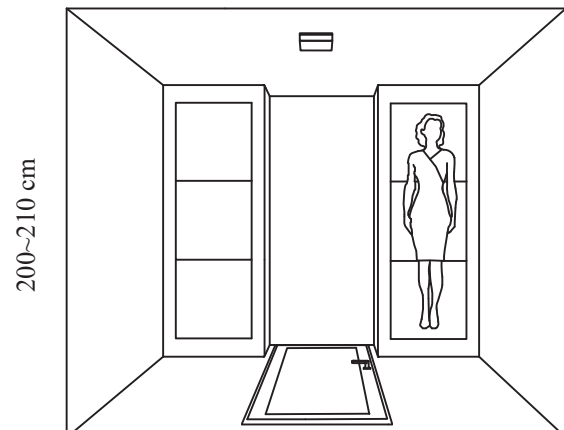
Voltage : Follow the working drawing

Consumption : Follow the working drawing

Control System : Automatic control by  
temperature sensor.  
Built-in 24-hour timer.

Standard Size TT Twin

240~260 cm







# TTL Twin Long

Twin Bed Long Style

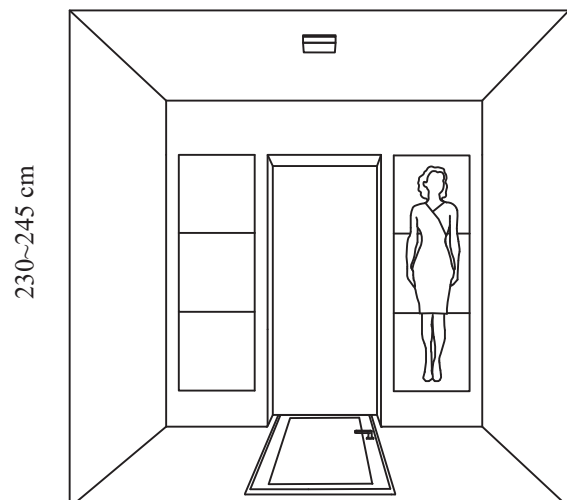
## Reference Specification

1.	Main ore	: Tenshoh seki	6 pcs
2.	Frame Stone	: Granite	1 set
3.	Insulation	: Urethane foam	8 pcs
4.	Heater Cable	: 1φ100/200V 50/60Hz	3 set
5.	Sensor	: Waterproof	4 pcs
6.	Controller	: 1φ100/200V 50/60Hz	2 set
7.	Transformer	: IN240/220V OUT200/100V	1 set

Type of Heater	: Waterproof type for ganbanyoku
Voltage	: Follow the working drawing
Consumption	: Follow the working drawing
Control System	: Automatic control by temperature sensor. Built-in 24-hour timer.

## Standard Size TTL Long

280~300 cm





# KT 3 Beds

Three Beds Style

## Reference Specification

1.	Main ore	: Tenshoh seki	9 pcs
2.	Frame Stone	: Granite	1 set
3.	Insulation	: Urethane foam	16 pcs
4.	Heater Cable	: 1φ100/200V 50/60Hz	2 set
5.	Sensor	: Waterproof	4 pcs
6.	Controller	: 1φ100/200V 50/60Hz	2 set
7.	Transformer	: IN240/220V OUT200/100V	1 set

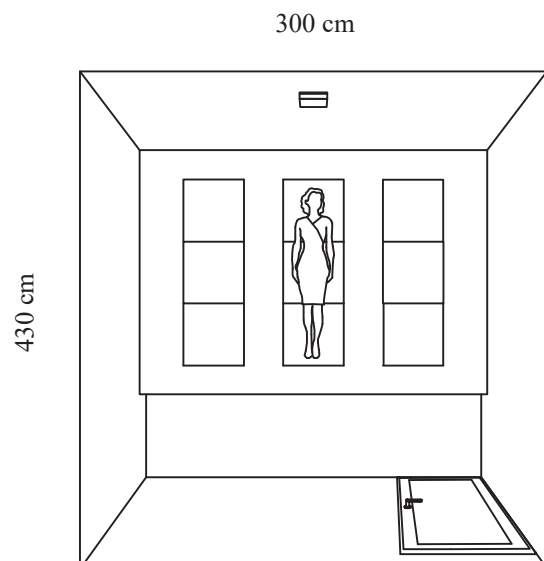
Type of Heater : Waterproof type for ganbanyoku

Voltage : Follow the working drawing

Consumption : Follow the working drawing

Control System : Automatic control by temperature sensor.  
Built-in 24-hour timer.

Standard Size KT3Bets





## KF 4 Beds

Four Beds Style

### Reference Specification

1.	Main ore	: Tenshoh seki	12 pcs
2.	Frame Stone	: Granite	1 set
3.	Insulation	: Urethane foam	22 pcs
4.	Heater Cable	: 1φ100/200V 50/60Hz	2 set
5.	Sensor	: Waterproof	4 pcs
6.	Controller	: 1φ100/200V 50/60Hz	2 set
7.	Transformer	: IN240/220V OUT200/100V	1 set

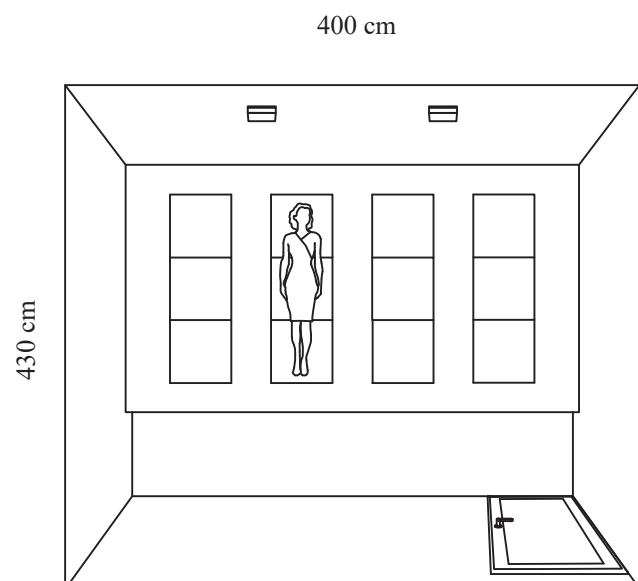
Type of Heater : Waterproof type for ganbanyoku

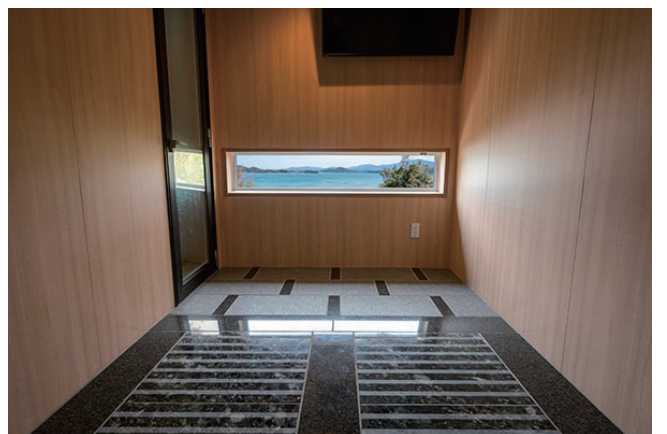
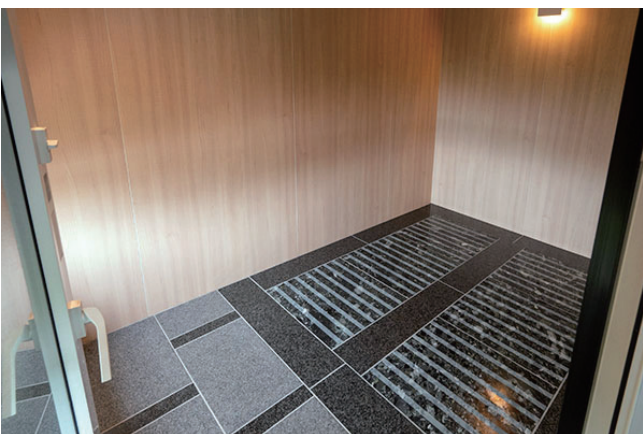
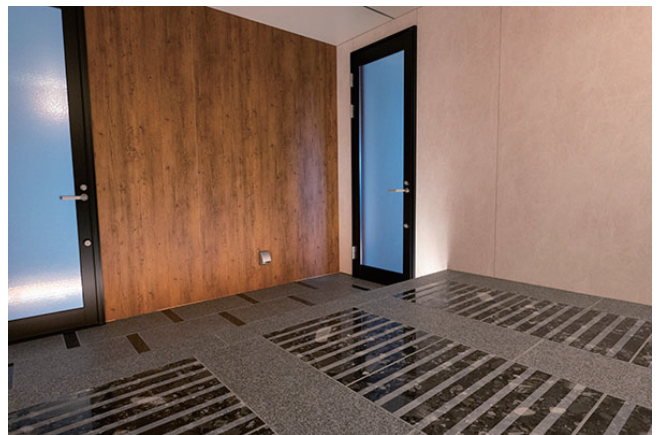
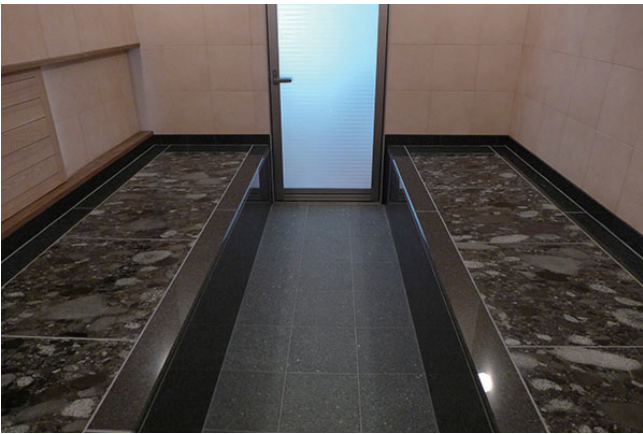
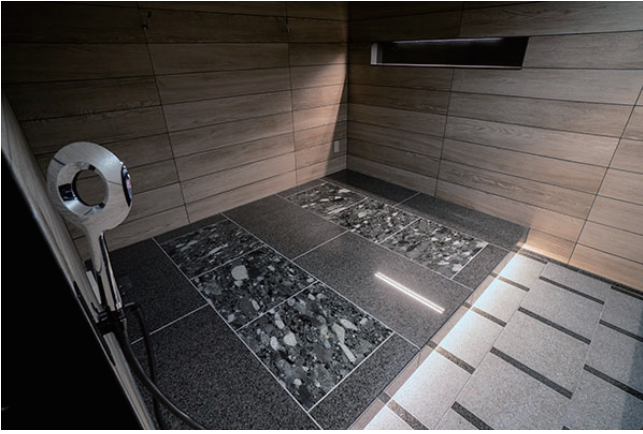
Voltage : Follow the working drawing

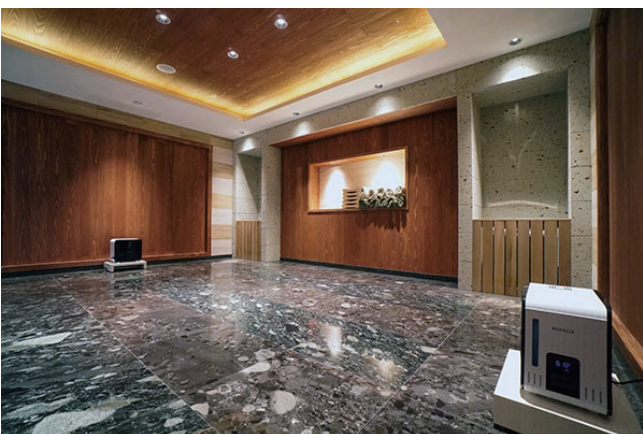
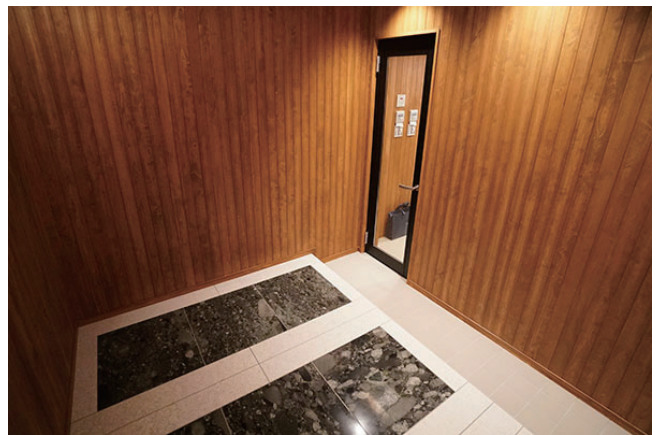
Consumption : Follow the working drawing

Control System : Automatic control by  
temperature sensor.  
Built-in 24-hour timer.

### Standard Size KF4Bets







GANBANYOKU PRIVATE SPA

Vol.10



**株式会社 グラニテック**

GRANITEC Ltd.

7-12-501 Hiemachi Hakata-ku

Fukuoka-city 812-0014 Japan

TEL. 092-433-0255

FAX. 050-3737-2816

Email. [ganban@granitec.co.jp](mailto:ganban@granitec.co.jp)

HP. <https://www.granitec.co.jp/>