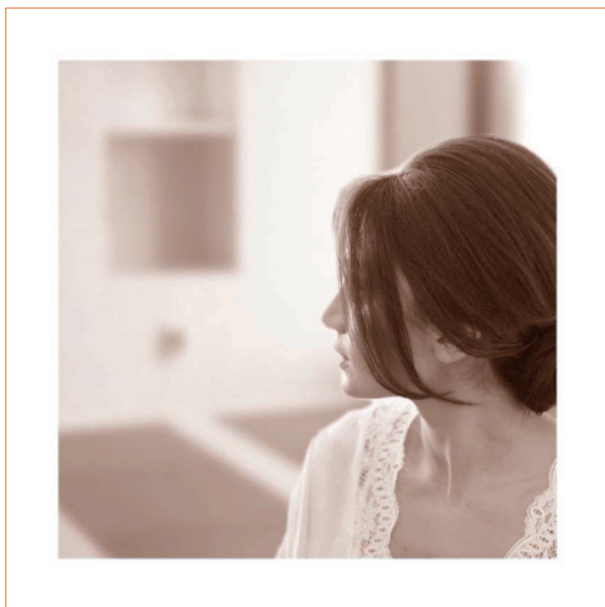


About the products for ganban-yoku

GANBAN-YOKU

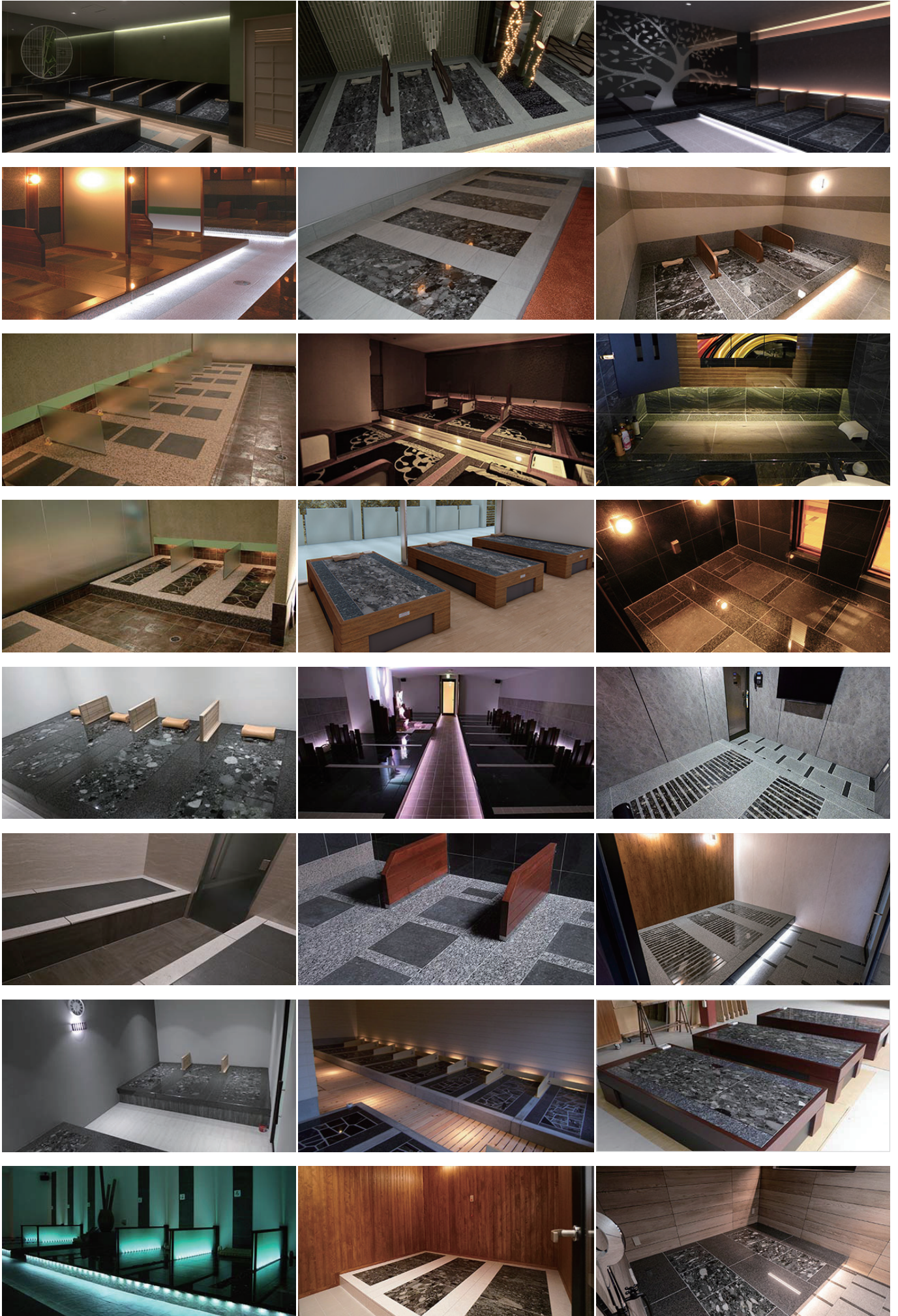
JAPAN
岩盤浴 



Simple and Natural Way to Boost Your Immune System

CONTENTS

sec. 1	image	04
sec. 2	summary	06
sec. 3	method	07
sec. 4	bed	08
sec. 5	usual	10
sec. 6	unit	11
sec. 7	ganbanyoku ore	12
sec. 8	flow chart	13
sec. 9	results	14
sec.10	manufacture	15



product identity

We'll help you with ganbanyoku facilities making which can be used surely lengthily
by excellent material and simlpe method of construction.



◆ Design / production / construction of GANBAN-YOKU

We have constructed more than 1,000 systems of GANBANYOKU since 1995. Our main customers were specialty spas, a hotel, a beauty treatment salon, fitness clubs, nursing home, a personal residence, in domestic and foreign. We utilize our original know-how and tries for offering "concise & high-quality" GANBANYOKU

◆ Systematic facilities usable for a long time

Construction and maintenance are concise and aim at the making of facilities available in peace for a long term by constructing reliable materials in a concise method of construction.

◆ Completely hygienic

We are making a special coating layer inside of the GANBANYOKU ore, it will suppress the occurrence of bacteria. and Our GANBANYOKU beds are the structure that sweat and moisture do not invade inside. In addition, because we understand hygiene management of various equipment of GANBANYOKU systems. You will enjoy a hygienic relaxation GANBANYOKU with confidence.

◆ Product and service

- Design / production / construction of GANBAN-YOKU system
- Supply of various GANBANYOKU parts.
- Suggestion of the administration operation

◆ Main customers

Spa, Beauty treatment salon, Hotel, Hot spring facilities, Hospital, Fitness club, Nursing home, Medical equipment maker, Personal residence.

◆ The delivery results

GANBANYOKU Over 1,000 installations

We offer an appropriate system to you. Even if it is any facilities at any place.

Method of GANBAN-YOKU

Cool & Dry Environment		Hot & Wet Environment		
Bed		Usual	Unit	
Facial Type Wide Type Box Type		Box Type	Wet process heating Dry process heating	Order Unite

1. Bed method of construction

Install ganbanyoku bed "GRABION" which a heat source was incorporated. Box-type bed is available in hot&wet environment.

Advantage : It functions just to insert an outlet.

Attention : When it is aimed for sweat in larg quantities, It is unsuitable.

Adoption : Beauty treatment salon, Personal residence, Elderly person facilities.

2. Usual method of construction

Method of construction to assemble the parts such as an ore or the electric heat set on the site.

Advantage : It is made with cheap cost and is adopted in many facilities.

Attention : "A dry process heating method of construction" is suitable where low load is pursued in.

Adoption : It is adopted widely from a store specializing in GANBAN-YOKU to a residence.

3. Unit method of construction

A factory produces the order system unit that all was incorporated in and can assemble it on the site.

Advantage : Quality such as the secrecy is stable.

Attention : It is more expensive than a traditional method of construction.

Adoption : Apartments etc.

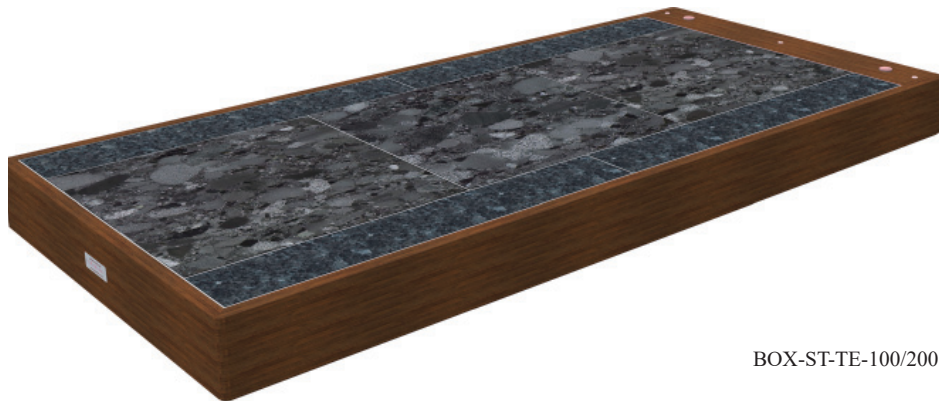
Box Type

Bed of the high durability performance for business use.

GRABION BOX - ST

[BOX-ST-100/200 Specification]

Controller : Separate
 Size : W92(98)×L200×H15cm
 Weight : 158kg (153kg)
 Rated Voltage : AC100V (AC200V)
 Power : 370W (360W)
 Consumption () AC200V Type

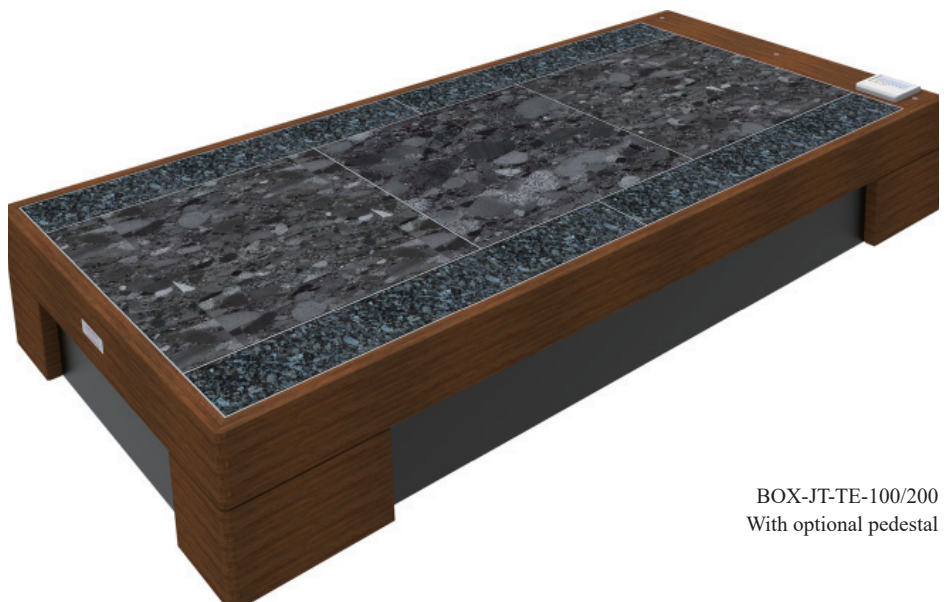


BOX-ST-TE-100/200

GRABION BOX - JN

[BOX-JN-100/200 Specification]

Controller : Integrated
 Size : W92(98)×L200×H15cm
 Weight : 158kg (153kg)
 Rated Voltage : AC100V (AC200V)
 Power : 370W (360W)
 Consumption () 200V Type



BOX-JT-TE-100/200
 With optional pedestal

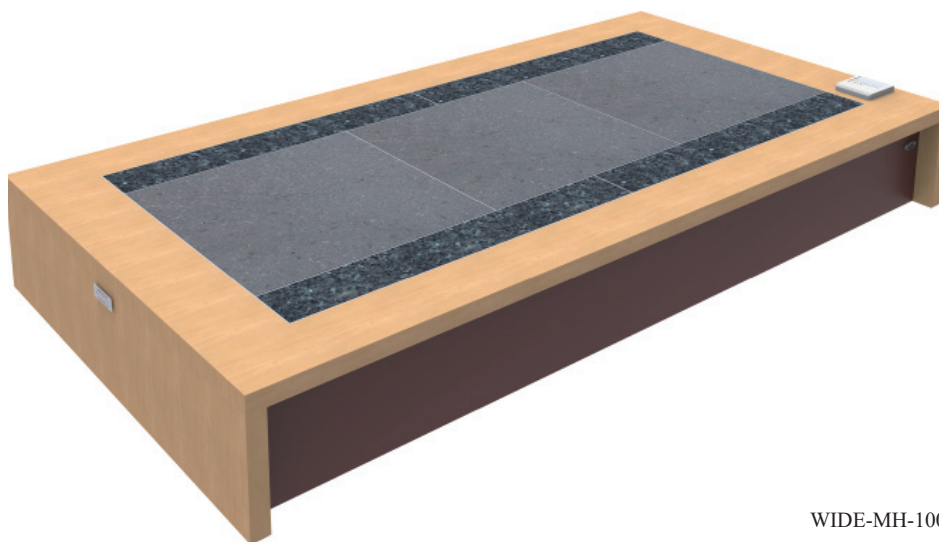
Wide Type

Bed of the basic-style taking off a pedestal and can use.

GRABION WIDE

[WIDE-100 Specification]

Controller : Integrated
 Size : W116×L210×H30cm
 Weight : 175kg
 Rated voltage : AC100V
 Power : 370W
 consumption



WIDE-MH-100

Facial Type

Because it is slim specifications, a compact layout is possible. The height setting that the beauty treatment salon surgical operation can perform with sleeping. The height of the pedestal is modifiable depending on a demand.

GRABION FACIAL

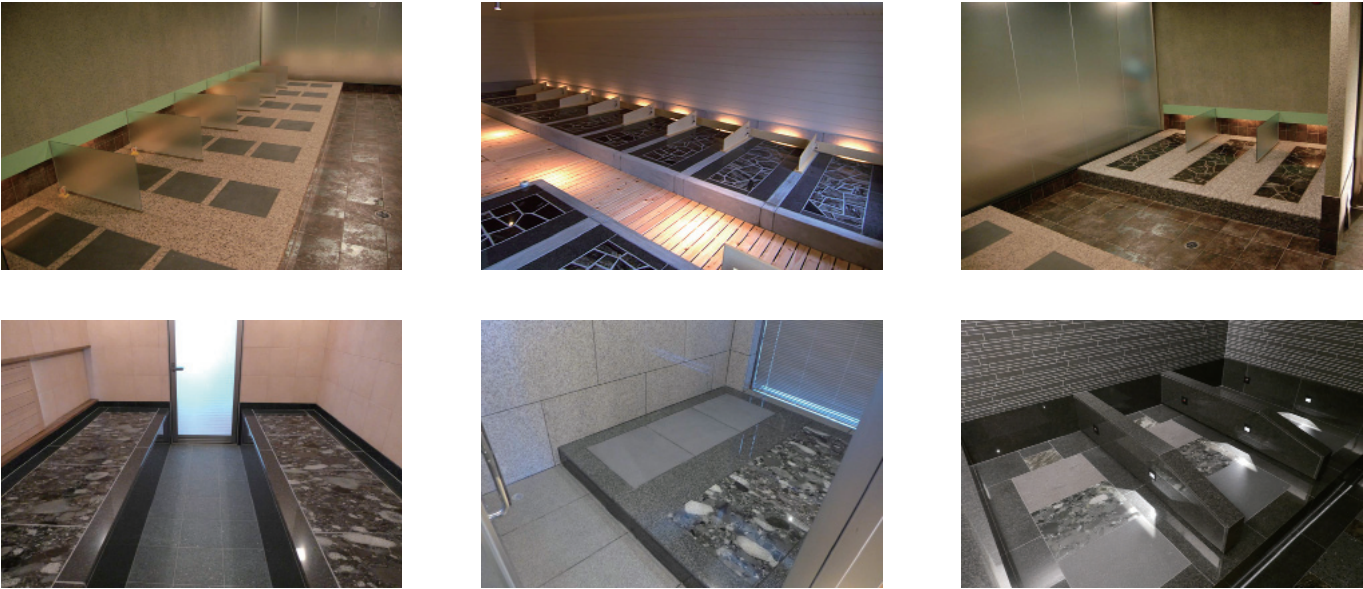
[FACIAL-100 Specification]

Controller : Integrated
 Size : W68×L188×H70cm
 Weight : 112kg
 Rated voltage : AC100V
 Power : 175W
 consumption



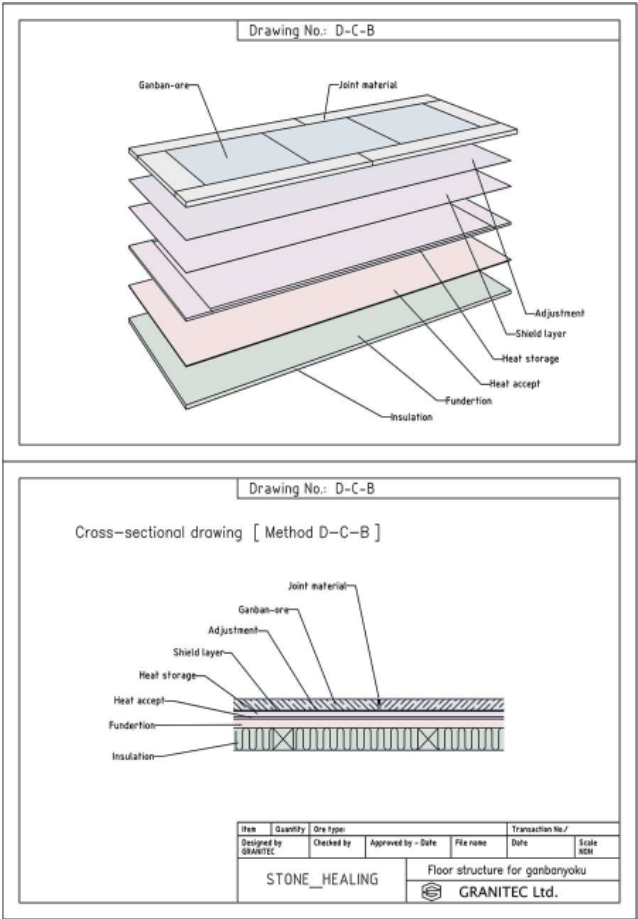
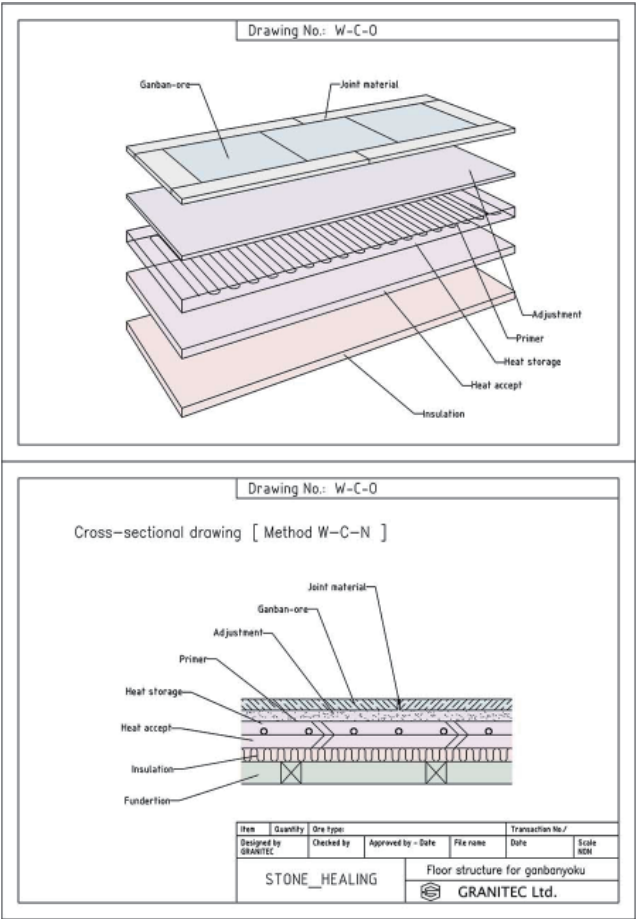
FACIAL-TE-100

The material such as an ore or the electric heat set is constructed on the site. We give information to the construction points such as bathroom structure or the method.

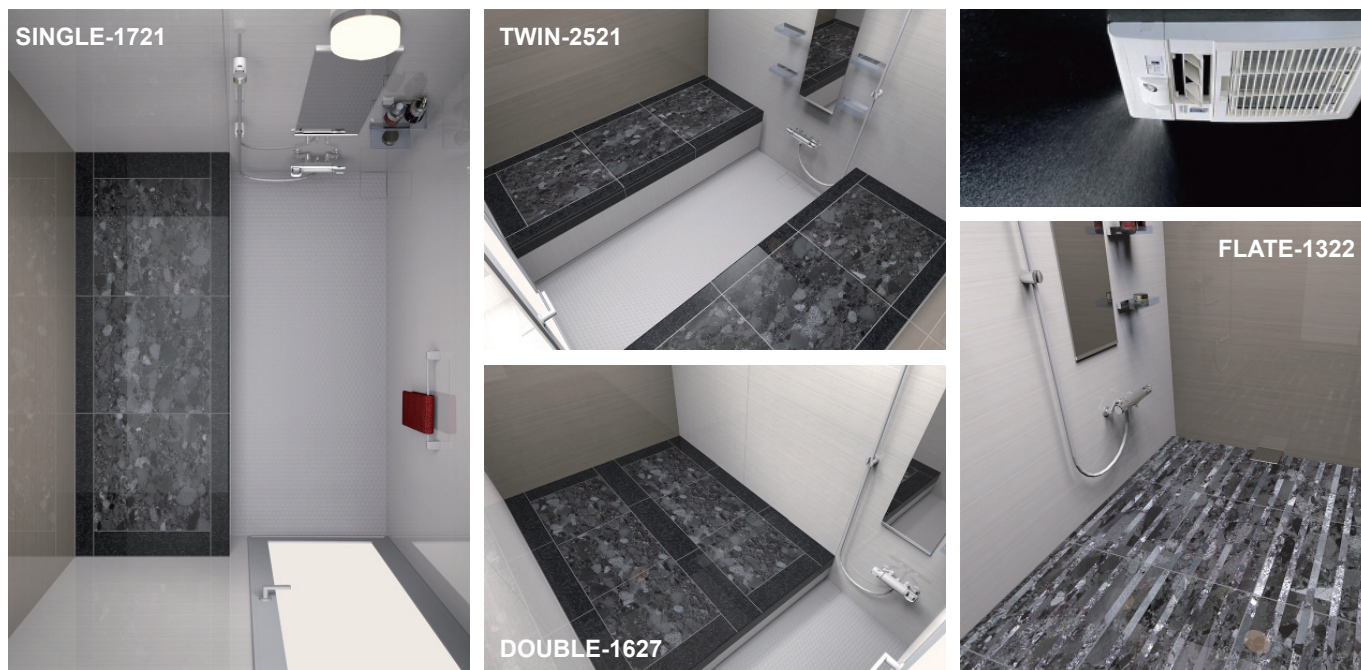


Wet Process

Dry Process

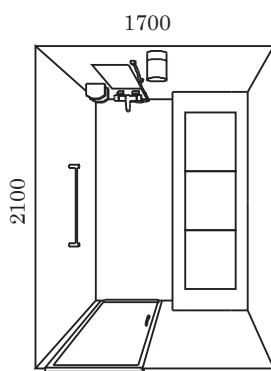


It is system unit for small GANBAN-YOKU such as personal residences. Because it comprises a shower, you can perform GANBAN-YOKU effectively. Besides, the hygiene management of bathroom is simple.



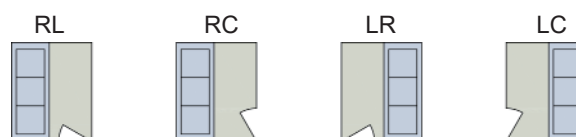
SINGLE-1721-LR Specification Example

Inside Size	: 1700×2100mm
Ganban-Ore	: Tenshoh-seki
Electrothermal	: AC200V 600W
Floor	: Thermo Floor
Wall	: Accent Panel Wooden Panel
	: Base Panel White Panel
Ceiling	: White Panel
Door	: W800×H2000
	: Resin lever handle
Light	: Grooming
Faucet	: Thermo Shower
Mirror	: Anti-Fogging
Towel Rack	: Metal Style
Option	: Waterproof TV



Plan Variation

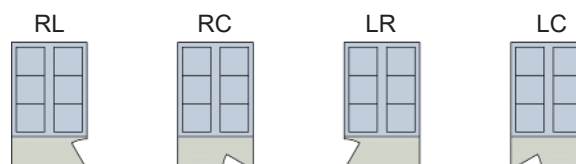
SINGLE-1721



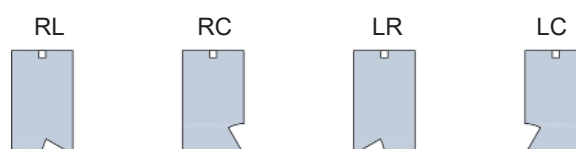
TWIN-2521



DOUBLE-1627

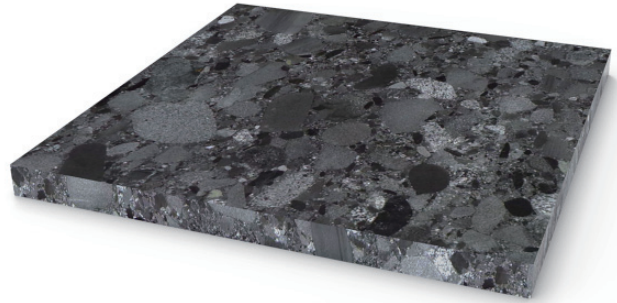


FLATE-1322



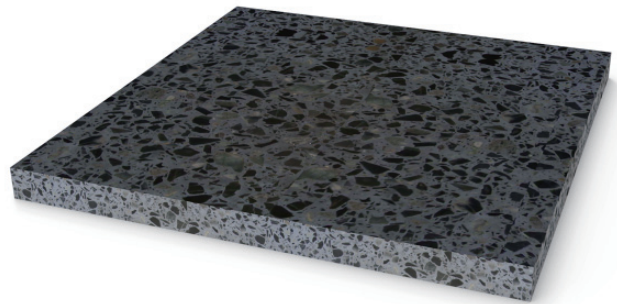
Tenshoh seki

This ore, classified as a conglomerate, is well known for emitting terahertz waves (cultivation waves), a far-infrared ray. This ore has gained an excellent reputation since being used in the first GANBAN-YOKU in Japan. The range of application for this ore is being expanded to the likes of GANBAN-YOKU, as it is sturdy and durable of ores for GANBAN-YOKU



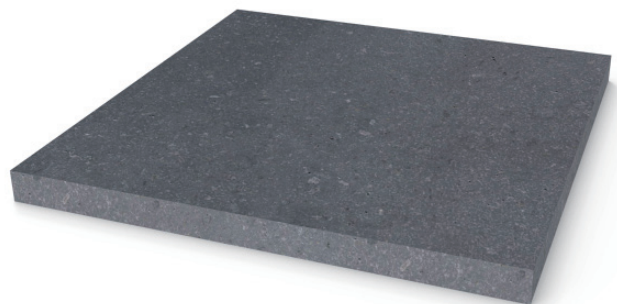
Black Silica

The black Silica mined in Hokkaido has been proven in water clarification and public projects. It has also been proven in many GANBAN-YOKU installations, mainly in Northern Japan. Crushed stone and Cement resin are mixed to produce the bedrock for GANBAN-YOKU.



Magma Otohime ishi

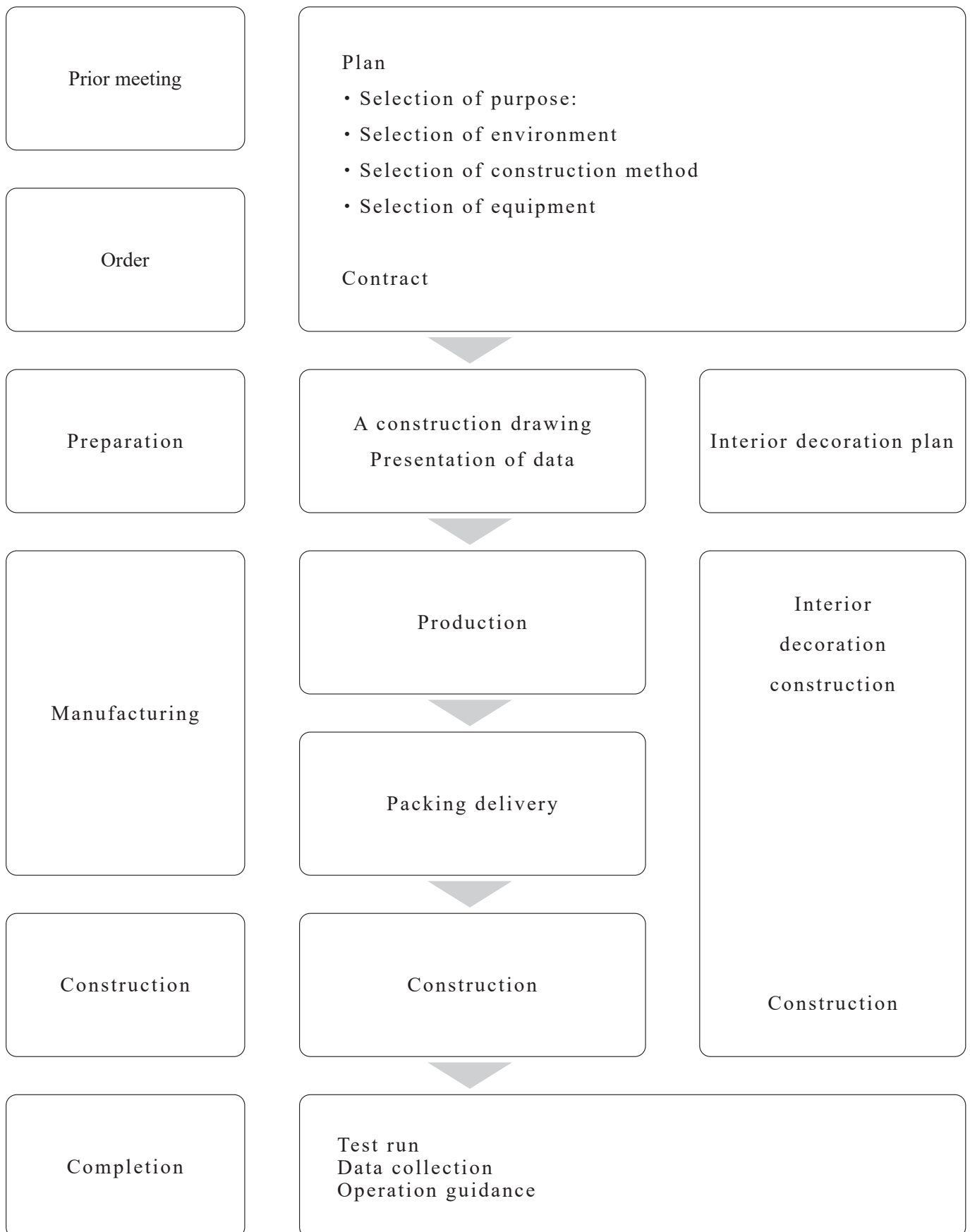
According to folklore, heating a woman's body with this stone will improve her health, and ensure healthy babies and a safe childbirth. This lava stone contains few grikes (holes) and features a beautiful matt texture with a blue-gray color tone.



Magma Black

The unique structure in which lenticular Black Silica intrudes into the lava (pyroxene rhyolite) means that the far-infrared effect is enhanced. This is a special ore with excellent efficacy, durability, and texture.





Over Seas Facilities

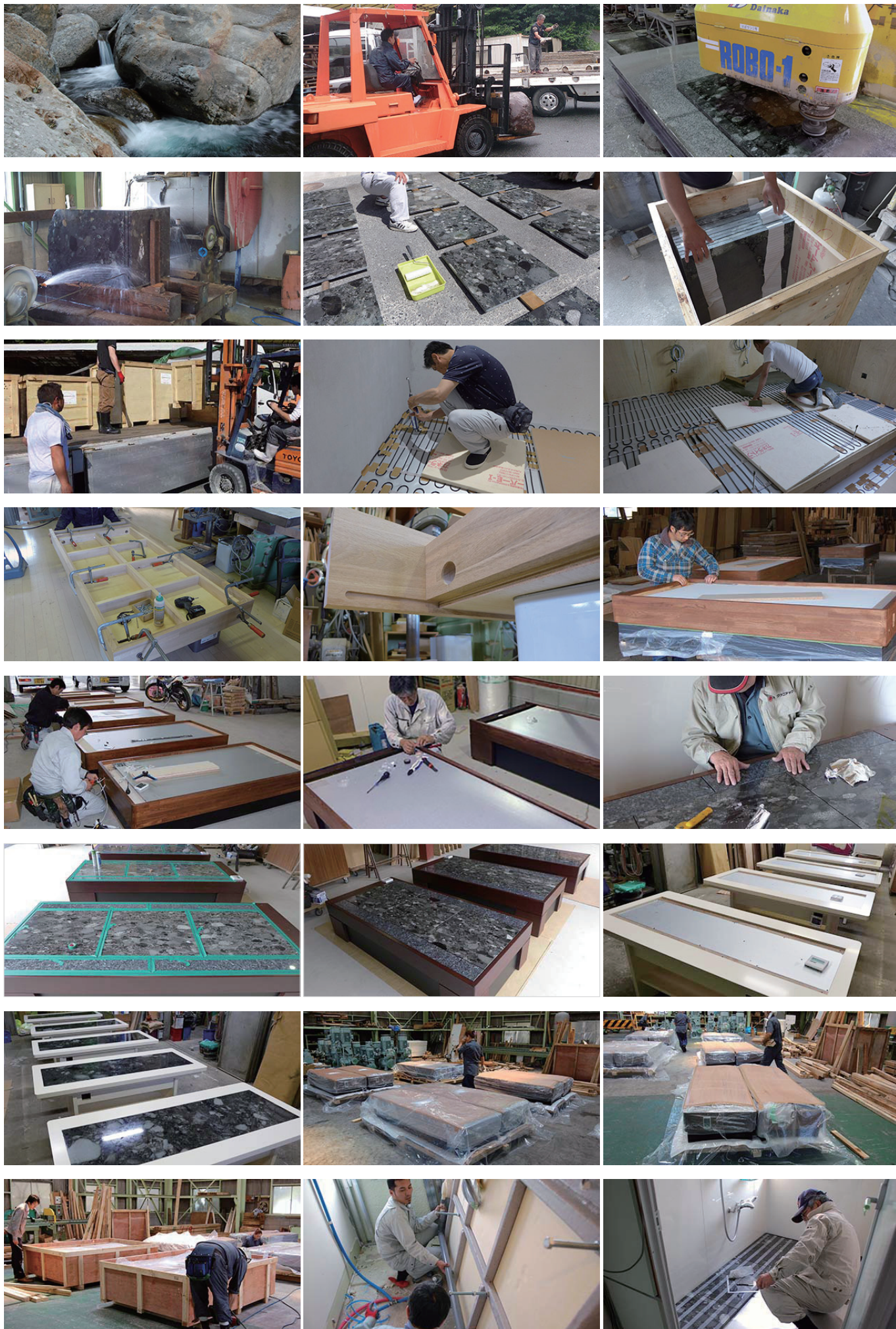
12 Articles

Times Square YM Spa	Matheson St. Causeway Bay Hong Kong	
Yamada Miyura Stone Spa	Soudwill Plaza 38 Russell St. Hong Kong	
Hot Stone Therapy	Far East Plaza 14 Scotts Singapore	
Spa Botanica	Finlayson Green Singapore	
Megmi Stone Spa	Burlington Avenue, Burnaby, B.C. Canada	
Beijing CHY Villa 7 Private Spa	Yu village Gaoliying Shunyi Qu Beijing China	
Chine Vitup Healthcare Holdings Inc	Liaoning Zhongshan Sheng, Dalian Chine	
Tenshoh Healing Body Clinic	Dongping St, Zhongshan Dalian China	and so on

Domestic Facilities

Over 1000 Articles

Hokkaido Area		
Este Ra Wool	Hokkaido Muroran city Rinzai Chou	and so on
Tohoku Area		
Hotel Iris	AKITA pref Yuri-Honjo city	and so on
Kanto Area		
Fitness Club Koraro	Tokyo Setagaya-ku Tamagawadai	and so on
Chubu Area		
Ganbanyoku Iyashi	Aichi pref Kariya city	and so on
Kinki Area		
Este Salon Sukicai	Osaka city Tyuo-lu Minami Honmachi	and so on
Chugoku Area		
Ganbanyoku Pocali	Hiroshima city Asakita-ku	and so on
Shikoku Area		
Ganbanyoku Yuranposu	Ehime pref Shikokutyuo city Mishimakaneko	and so on
Kyushu Area		
Healing Spa AVA	Fukuoka pref Onga gun Ashiya machi	and so on



GANBAN-YOKU

Vol.10



株式会社 グラニテック

GRANITEC Ltd.

7-12-501 Hiemachi Hakata-ku

Fukuoka-city 812-0014 Japan

TEL. 092-433-0255

FAX. 050-3737-2816

Email. ganban@granitec.co.jp

HP. <https://www.granitec.co.jp/>